


Generation & transmission Automation relays

- **Monostable and bistable relays**
- **Fast-response relays**
- **Time-delay and supervision relays**

A comprehensive offering
for the energy market



Designed and manufactured in France 

Chauvin Arnoux Energy proposes an offering suitable for the most demanding environments

A photograph of a nuclear power plant with two large cooling towers emitting thick white steam. The plant is situated in a valley with a river in the foreground and hills in the background under a clear sky.

Nuclear power

Drawing on our expertise acknowledged by the decision-makers in the energy sector, we continue to constantly innovate in the field of automation relays, adapting to the most demanding technical and standardization constraints.

✓ *Qualified by electricity generators*

Hydroelectric dam

A photograph of a large hydroelectric dam with multiple spillways. Water is cascading down the spillways, creating a misty spray at the base. The dam is illuminated with warm lights, and the sky is a deep blue, suggesting dusk or dawn.

In nuclear, thermal and hydroelectric power plants, we have been handling the specific, demanding requirements of power generation companies for decades.

Power grids

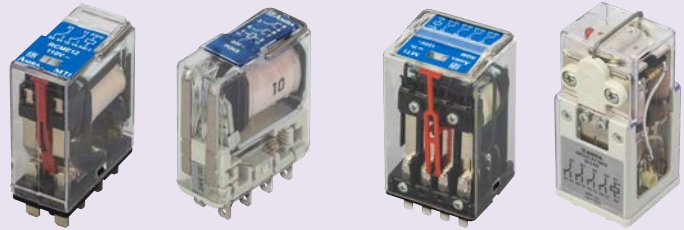
A photograph of a high-voltage electrical substation. The image shows a complex network of metal structures, insulators, and power lines. The sky is overcast with grey clouds.

We propose rugged, long-term solutions for power transmission and distribution networks which are continuously operated, maintained and developed.

Our relays range: suitable for all your markets

Monostable relays

- 2 - 4 - 6 - 8 - 12 - 20 change-over contacts
- Compact
- Contact position indicator
- K3-qualified relays for the nuclear range



Fast-acting monostable relays

- 4 - 8 - 12 change-over contacts
- Operating time < 8 ms
- High Burden option
- Lever for manual operation



Bistable relays

- 3 - 4 - 8 - 12 - 20 change-over contacts
- Magnetic holding action
- Contact position indicator
- Permanent or pulse control
- Lever for manual operation



Fast-acting bistable relays

- 4 - 8 - 12 change-over contacts
- Operating time < 10ms
- High Burden option
- Lever for manual operation



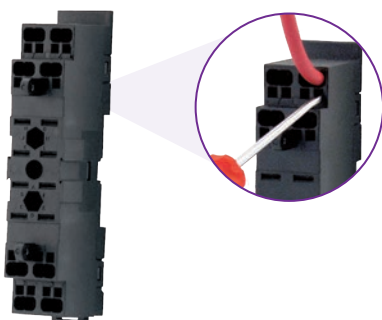
Time-delay relays and supervision relays

- 4 time-delay change-over contacts or (2 time-delay + 2 instantaneous) change-over contacts
- Time delay on pick-up or drop-out
- Adjustable time delay (from a few ms to more than 16 hours)
- No programmable digital components (valid for our nuclear power offering)



Our sockets offering: optimize your connections

Wide range of sockets with front and rear mounting.



Spring



Screw



Faston

Relays offering for power grids

Discover our new range of fast-acting monostable and bistable relays (4, 8 or 12 contacts). Also called "Tripping relays" or "Lockout relays", these meet the strictest requirements for power grids and have already been qualified by grid managers, guaranteeing reliability and high performance.

Overview of ranges

RGMV / RGBV
Range
↓ ↓
Tripping Lockout



RMMV / RMBV
Range
↓ ↓
Tripping Lockout



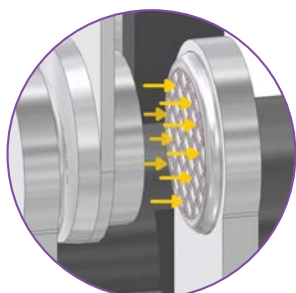
Strengths

Manual lever

For SET and RESET operations on bistable / lockout relays

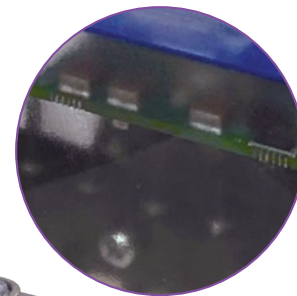
High insulation

5 kV insulation level
(1.2/50 μ s - 0.5 J)

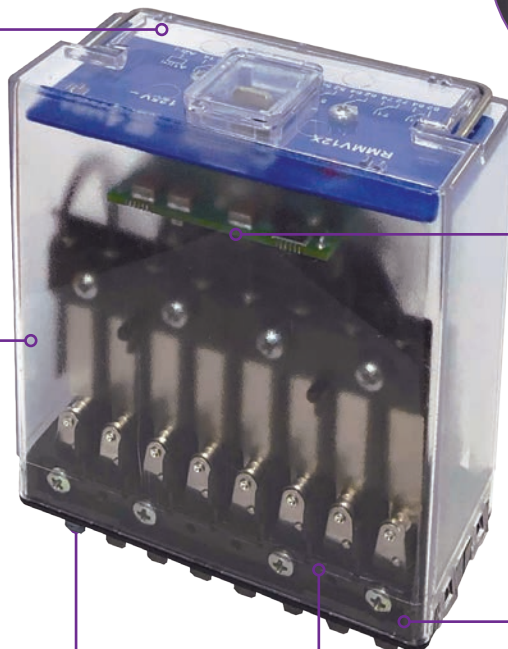


Knurled contacts

Can also be used to control light loads



High Burden option provides immunity against capacitive discharges



Relays equipped as standard

with a magnet for magnetic blowout, allowing the breaking capacity of the contacts to be increased

Our contacts are sized to break heavy loads

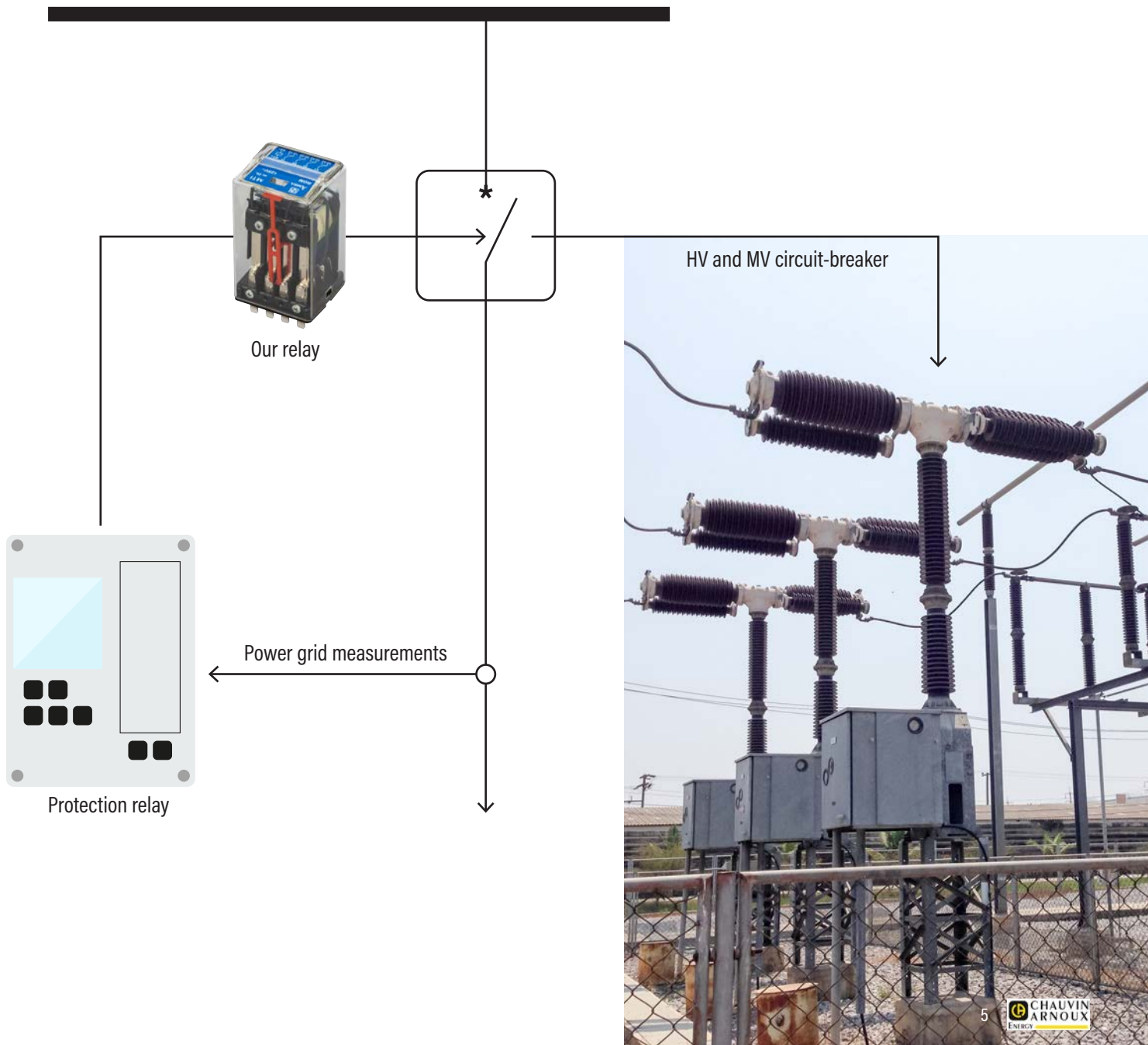
Switching time on pick-up

Monostable / tripping : ≤ 8 ms
Bistable / lockout : ≤ 10 ms



Our fast-acting relays at the heart of a protective chain

Our products are used as interfaces between the protection relays and the HV and MV circuit-breakers. In this protective chain, information must be passed on quickly, which is why a fast-acting relay is used.



Relays offering for hydroelectric power

Our hydroelectric offering comprises monostable relays with 2-4 and 8 contacts, bistable relays with 4 and 8 contacts and time-delay relays with 4 contacts for breaking both light and very heavy loads.

Overview of ranges

RGM
Range
↓
Monostable



RDT
Range
↓
Time-delay



RMB
Range
↓
Bistable



Focus on our high-EMC interface relays



Our 2 and 4-contact instantaneous relays (used as interfaces) have particularly high protection in terms of their EMC* response, so that your installations do not suffer from untimely tripping in the event of lightning strikes, thus avoiding considerable restart costs for restarting.

* ElectroMagnetic Compatibility



This offer is also available with an option for gold-plated contacts

Compatible with our sockets with spring clamps



PAIR080



- Double output connectors
- Quick installation: 30% time saving on wiring work
- Connection on DIN Rail or panel

Relays offering for nuclear power

Our relays offering has been approved and qualified by the major players in the nuclear sector involved in EPR reactors. With proven availability for more than 50 years, our reliable relay guarantees an exceptionally long life span.

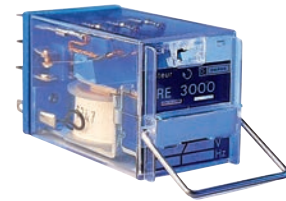


Instantaneous relays

Heavy load



OK-B 184



RE 3000N

"Intermediate" load



POK Series



Time-delay relays

Heavy load



4 time-delay contacts



TOKE/R



4 time-delay contacts



OKTAB/OKTRB

"Intermediate" load



2 instantaneous contacts
+ 2 time-delay contacts



OKTtB (ECC or RIC)



Sockets common
to all our 4-contact
relays

How to contact us

10 subsidiaries worldwide

CHINA
SHANGHAI PU-JIANG ENERDIS
INSTRUMENTS CO. LTD
3 Floor, 23 Building
Gemdale Viseen Minhang Technology
& Industrial Park Project
1288 lane, Zhongchun Road
Minhang District, SHANGHAI City
Tél. : +86 21 65 21 51 96
Fax : +86 21 65 21 61 07
info@chauvin-arnoux.com.cn

SPAIN
Chauvin Arnoux IBÉRICA SA
C/ Roger de Flor N°293 1a Planta
08025 BARCELONA
Tél. : +34 93 459 08 11
Fax : +34 93 459 14 43
info@chauvin-arnoux.es
www.chauvin-arnoux.es

SCANDINAVIA
CA MÅTSYSTEM AB
Sjöflygvägen 35
SE-183 62 TABY
Tél. : +46 8 50 52 68 00
Fax : +46 8 50 52 68 10
info@camatsystem.com
www.camatsystem.com

ITALY
AMRA SPA
Via Sant'Ambrogio, 23
20846 MACHERIO (MB)
Tél. : +39 039 245 75 45
Fax : +39 039 481 561
info@amra-chauvin-arnoux.it
www.chauvin-arnoux.it

MIDDLE EAST
Chauvin Arnoux Middle East
PO Box 60-154
1241 2020 JAL EL DIB
(Beyrouth) - LIBAN
Tél. : +961 1 890 425
Fax : +961 1 890 424
camie@chauvin-arnoux.com
www.chauvin-arnoux.com

SWITZERLAND
Chauvin Arnoux AG
Moosacherstrasse 15
8804 AU / ZH
Tél. : +41 44 727 75 55
Fax : +41 44 727 75 56
info@chauvin-arnoux.ch
www.chauvin-arnoux.ch

GERMANY
Chauvin Arnoux GmbH
Ohmstraße 1
77694 KEHL / RHEIN
Tél. : +49 07851 99 26-0
Fax : +49 07851 99 26-60
info@chauvin-arnoux.de
www.chauvin-arnoux.de

USA
Chauvin Arnoux Inc
d.b.a AEMC Instruments
15 Faraday Drive.
Dover - NH 03820
Tél. : +1 (603) 749-6434 ext. 520
Fax: +1 (603) 742-2346
sales@aemc.com
www.aemc.com

AUSTRIA
Chauvin Arnoux Ges.m.b.H
Gastgebgrasse 27
1230 WIEN
Tél. : +43 1 61 61 9 61
Fax : +43 1 61 61 9 61-61
vie-office@chauvin-arnoux.at
www.chauvin-arnoux.at

UK
Chauvin Arnoux Ltd
Unit 1 Nelson Ct, Flagship Sq
Shaw Cross Business Pk, Dewsbury
West Yorkshire - WF12 7TH
Tél. : +44 1924 460 494
Fax : +44 1924 455 328
info@chauvin-arnoux.co.uk
www.chauvin-arnoux.com

Check out our catalogs



Contact

Email: stephane.astier@chauvin-arnoux.com

Tel.: +33 (0)1 75 60 10 53

www.chauvin-arnoux-energy.com

INTERNATIONAL
Chauvin Arnoux Energy
16, rue Georges Besse
92182 ANTONY Cedex
Tél. : +33 1 75 60 10 30
Fax : +33 1 46 66 62 54
caenergy@chauvin-arnoux.com
www.chauvin-arnoux-energy.com

FRANCE
Chauvin Arnoux Energy
16, rue Georges Besse
92182 ANTONY Cedex
Tél. : +33 1 75 60 10 30
Fax : +33 1 46 66 62 54
caenergy@chauvin-arnoux.com
www.chauvin-arnoux-energy.com

SWITZERLAND
Chauvin Arnoux AG
Moosacherstrasse 15
8804 AU / ZH
Tél. : +41 44 727 75 55
Fax : +41 44 727 75 56
info@chauvin-arnoux.ch
www.chauvin-arnoux.ch

